

Kindergarten

Day 2

A Frog's Life Cycle

by Rachelle Kreisman



Baby frogs are called tadpoles. As tadpoles grow, they change shape. They turn into frogs.

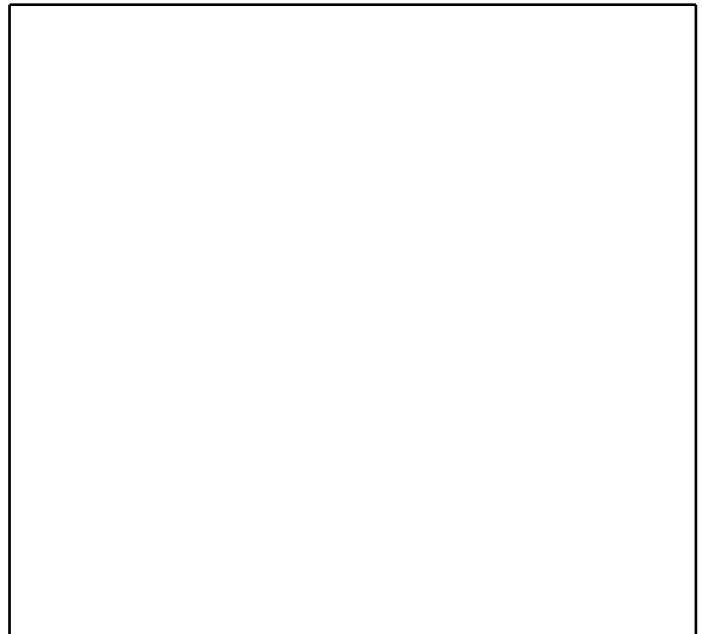
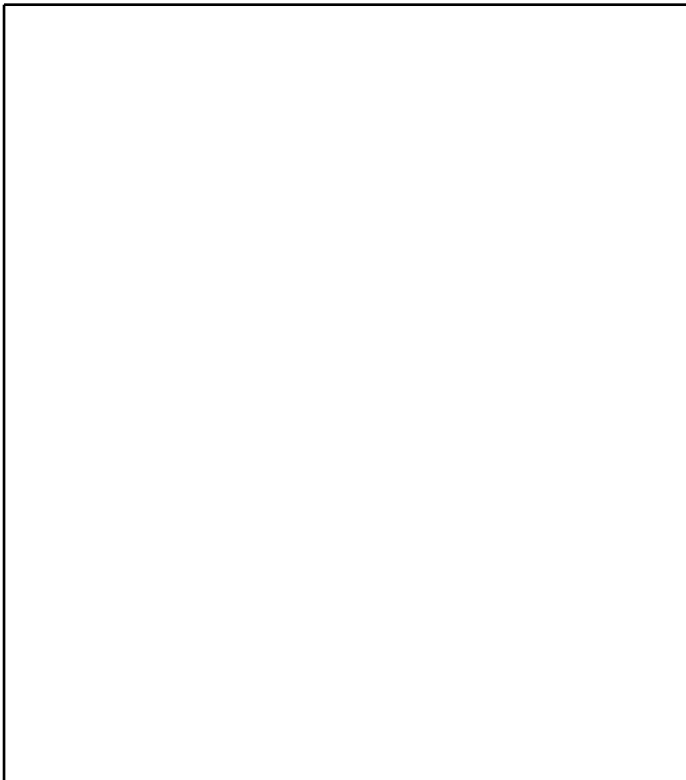
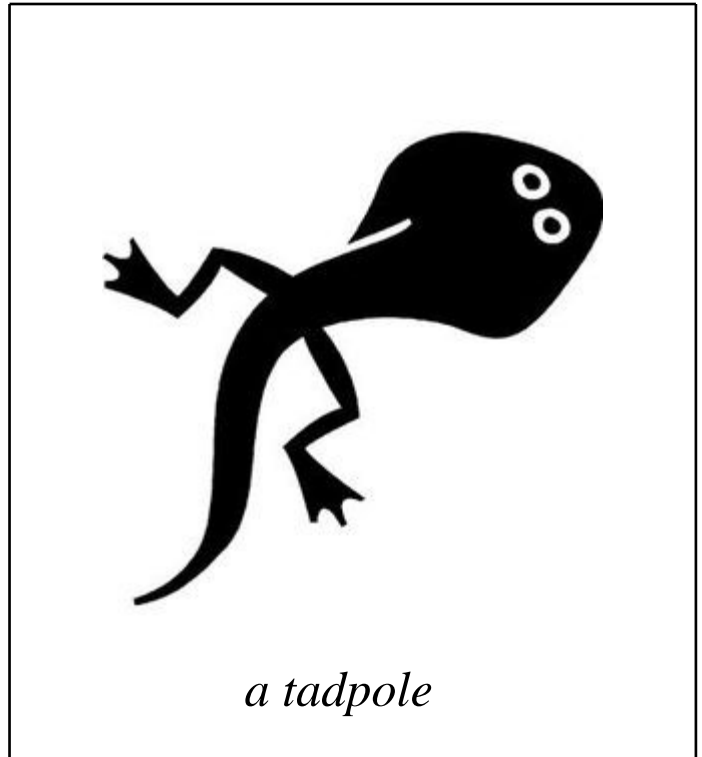
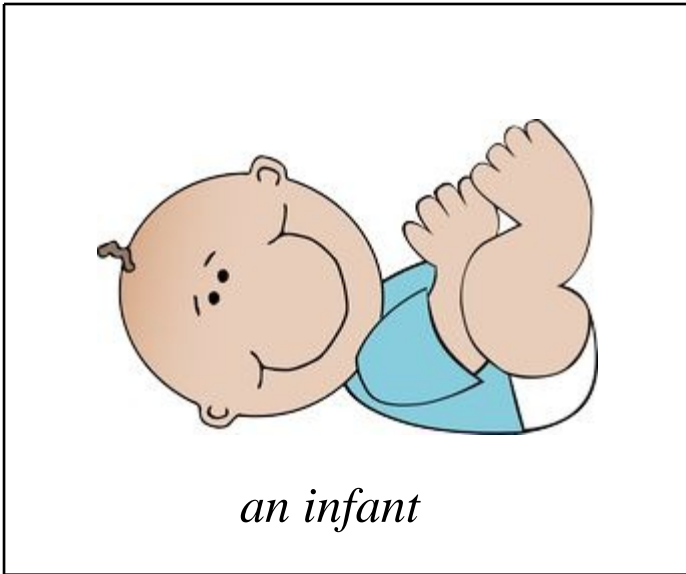
A mother frog lays eggs in, or near, water. Inside each egg, a tadpole grows. Then the tadpole hatches. It has a long tail. The tadpole swims like a fish. It uses gills to breathe underwater.

Next, the tadpole grows legs and toes. Its gills and tail get smaller. The tadpole grows lungs. Now the tadpole is a froglet.

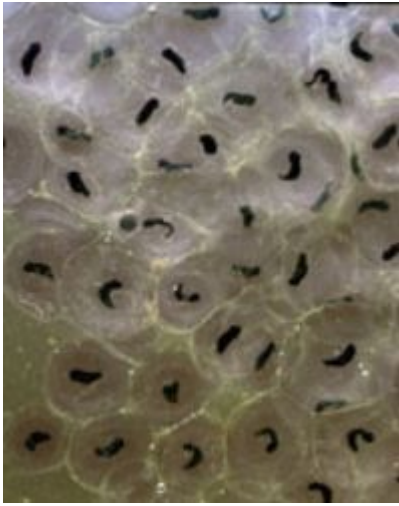
The froglet's tail gets shorter. Soon, its tail is gone. It can leave the water. It can breathe using lungs. The froglet is now a frog.

Name: _____ Date: _____

1. What is a baby frog called?



2. What do tadpoles hatch out of?

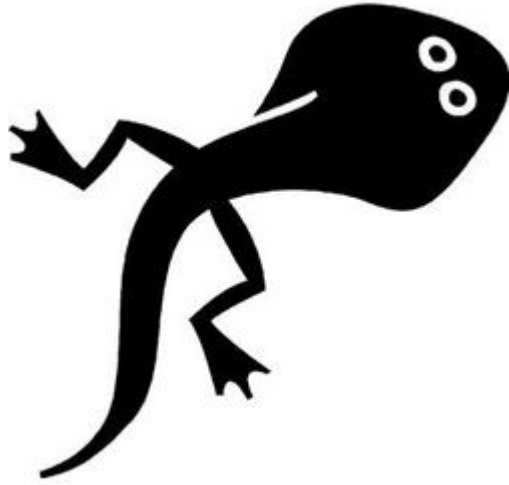


eggs [Adam Hart-Davis/DHD Multimedia Gallery]



nests

3. What does a tadpole grow as it becomes a froglet?



gills and a tail

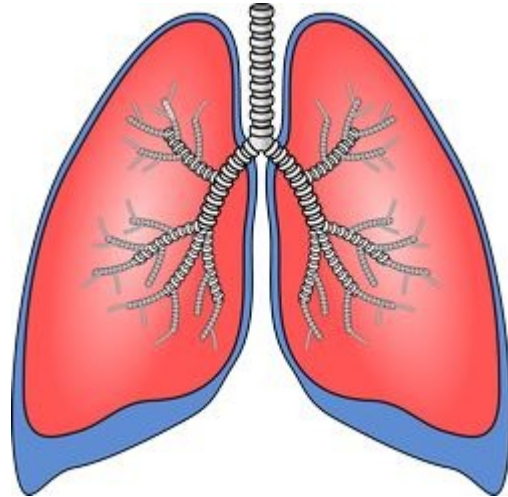


legs and toes

4. What do frogs have that allow them to breathe out of the water?



gills



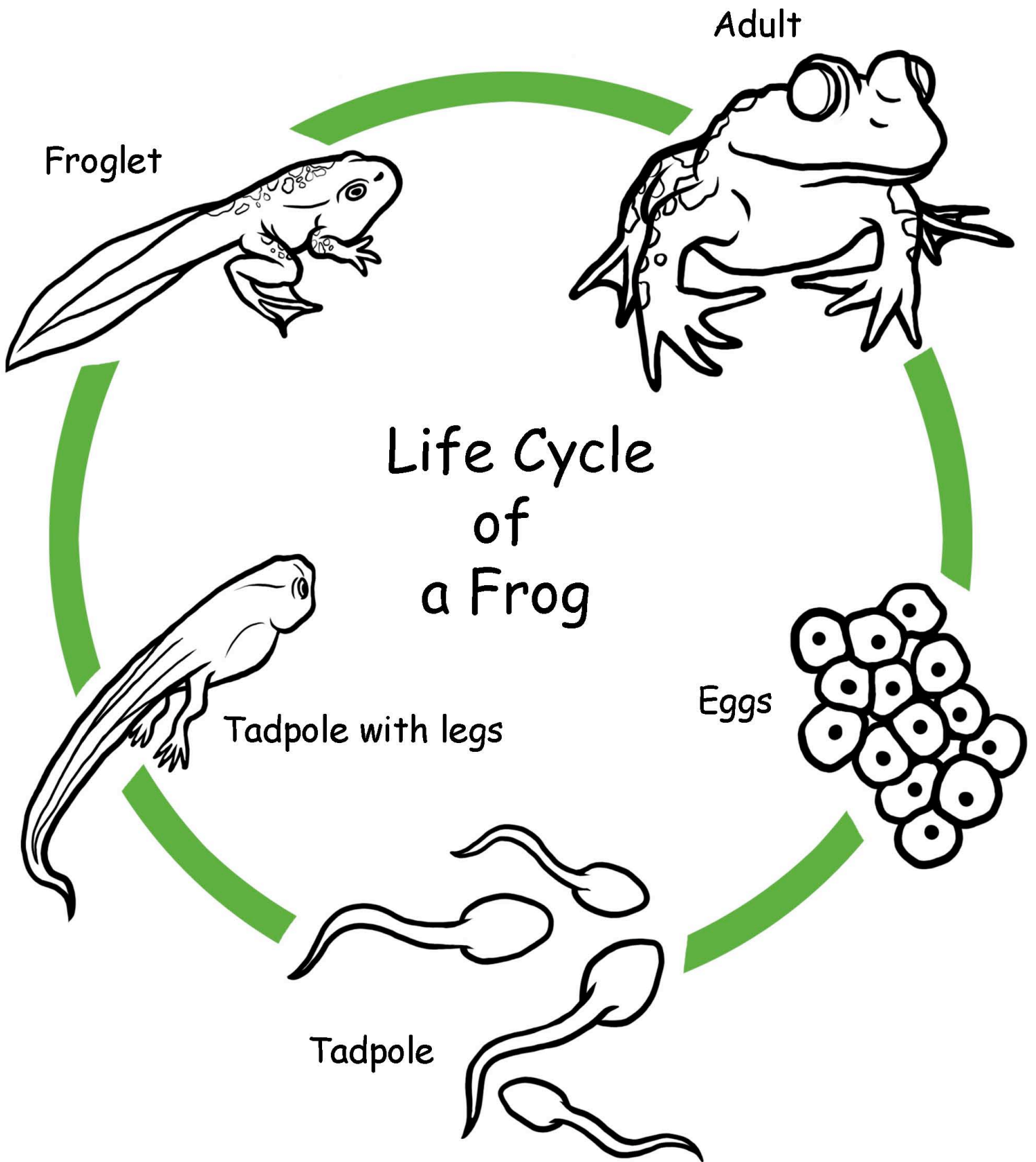
lungs

5. What do tadpoles have that frogs do not have?

Tadpoles have

6. What did you learn from "A Frog's Life Cycle"?

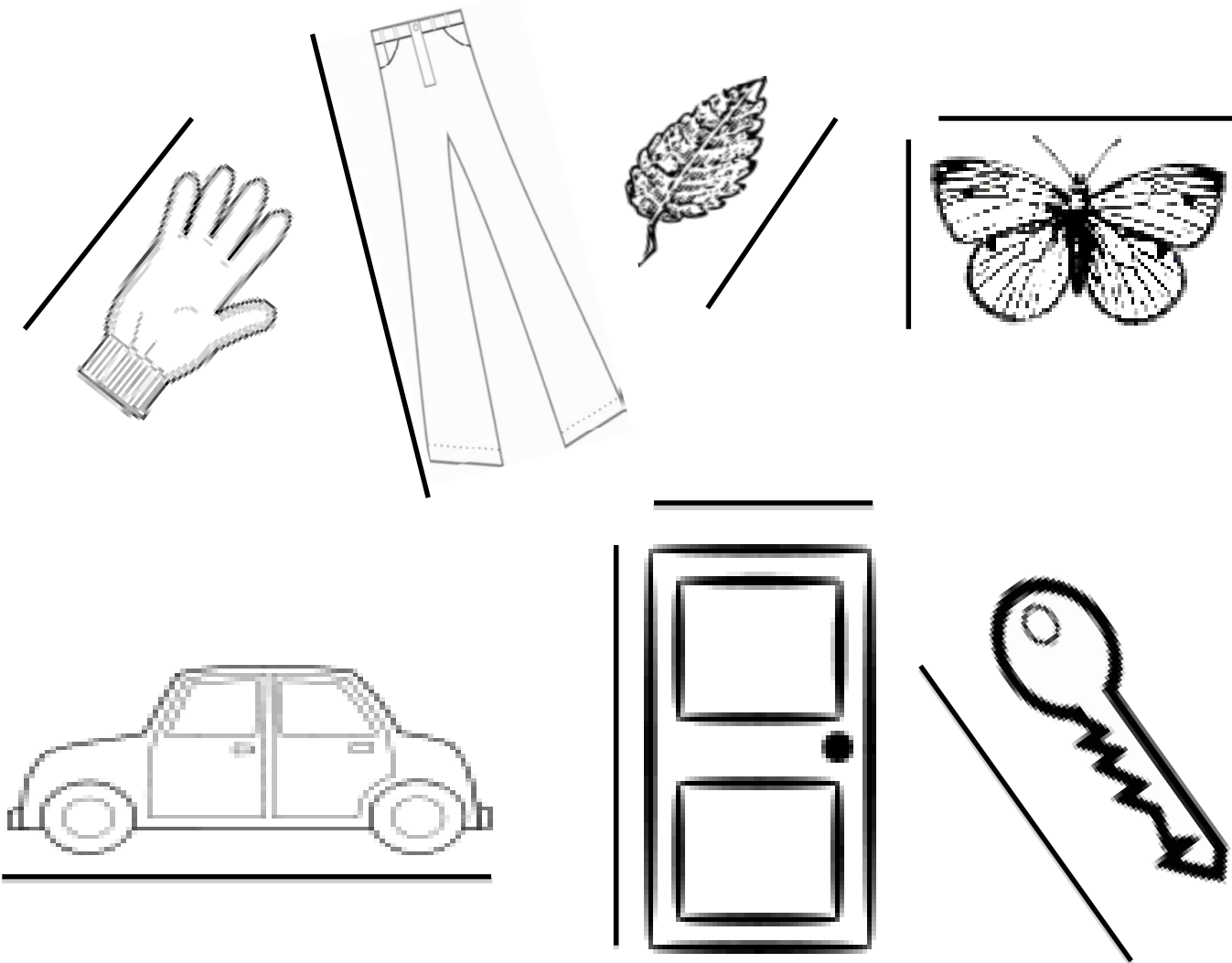
7. Draw a picture of a tadpole.



Name _____

Date _____

Cut out the picture of the string at the bottom of the page. Compare the string with each object to see which is longer. Use the line next to each object to help you compare. Color objects shorter than the string green. Color objects longer than the string orange.



On the back of your paper, draw something longer than, shorter than, and the same length as the picture of the string. Color objects shorter than the string green. Color objects longer than the string orange.



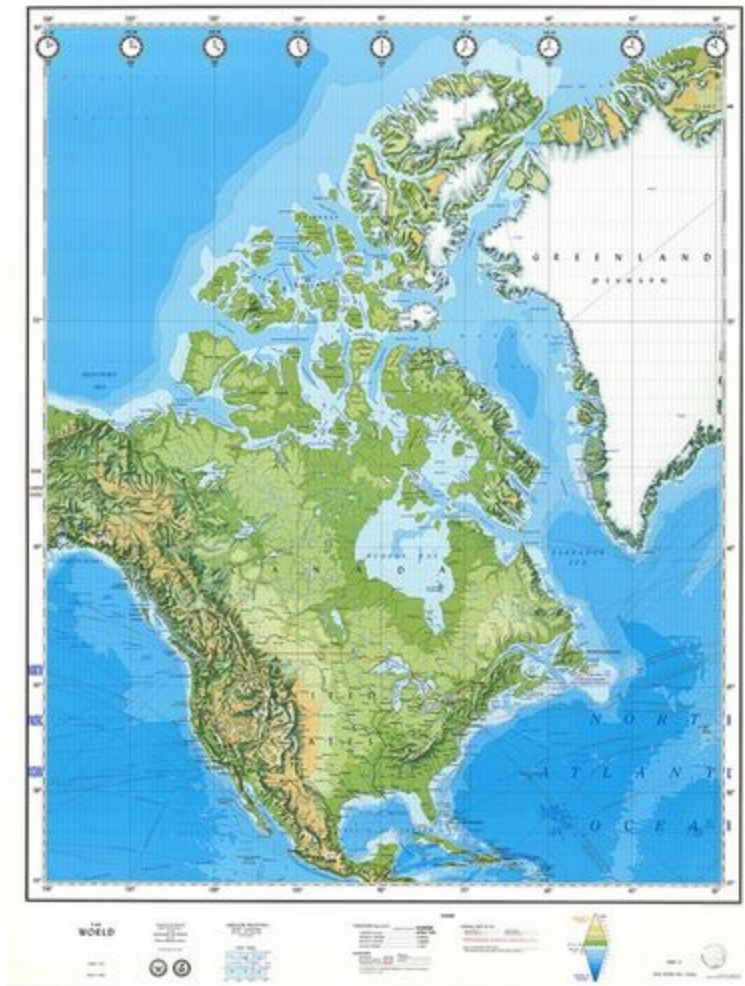
Maps and Globes

Imagine you are on a camping trip with your family. You need to find the place where you are going to camp. You're in the mountains and phones don't work there. What might you use to find your way?

You might use a map! Maps are pictures of a place on Earth. These pictures are printed or drawn on something flat, like a big piece of paper. Maps can help you find your way. Different maps can show you different things. Some maps may show you the roads and rivers near a mountain. Some maps may show you where different towns and cities are. Other maps may even show you where different countries and oceans are!

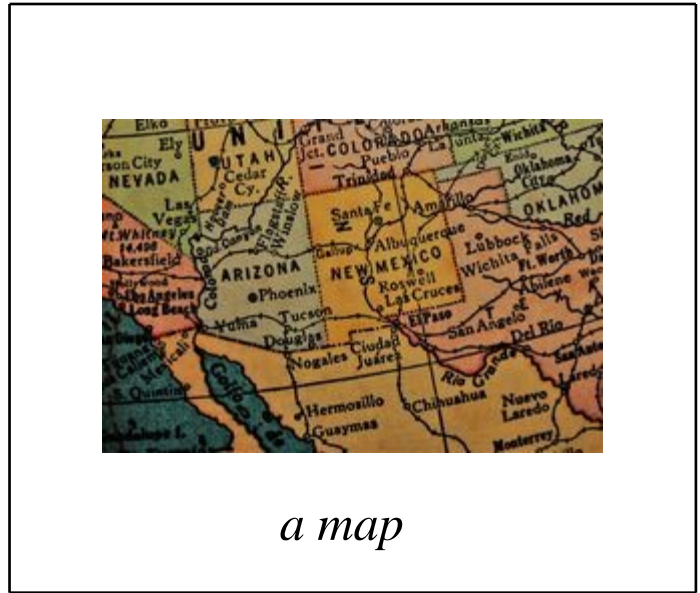
If you're in your classroom, look around. Do you see a globe? A globe is a round ball with a map of Earth on it. You can find the Earth's oceans on a globe. You can find the Earth's countries on a globe.

Now take a look at these two photos. Which one shows a map? Which one shows a globe?

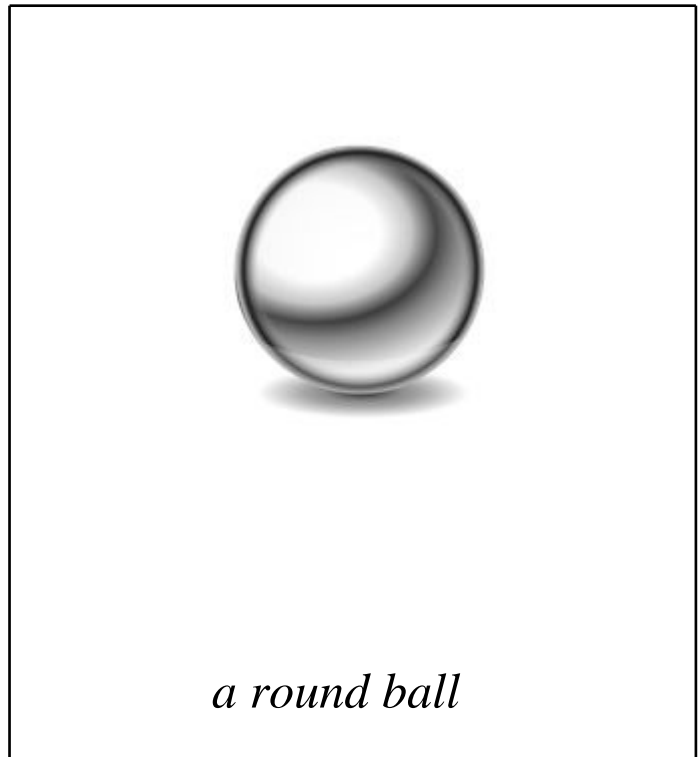
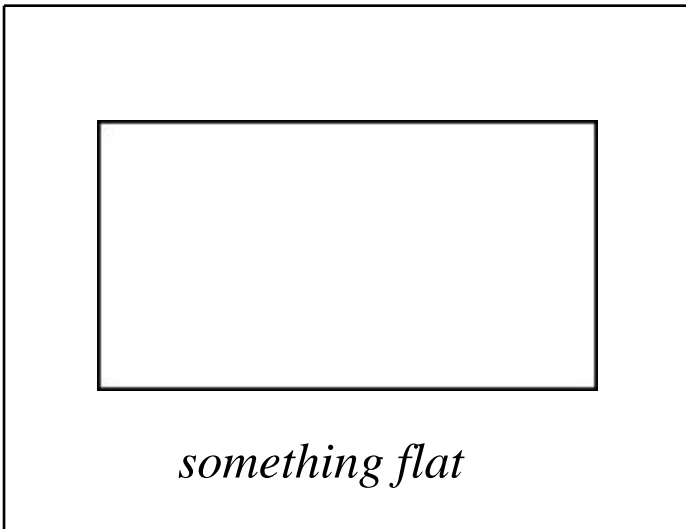


Name: _____ Date: _____

1. What can help you find your way around a mountain?



2. What is a map drawn on?



3. What is a globe a map of?

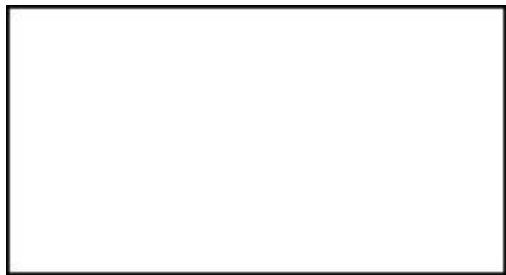


the entire Earth



roads and rivers

4. What shape is a globe?



a flat rectangle



a round ball